



# Building the Education Revolution Primary Schools for the 21<sup>st</sup> Century

Illawarra and South Coast

## Information Forum

Heininger Hall, Dapto

11th June 2009



**RICHARD CROOKES**  
  
**CONSTRUCTIONS**

# Welcome

**David Michel**

General Manager

Richard Crookes Constructions



# Agenda

1. Introduction
2. Ms. Noreen Hay, Member for Wollongong
3. Program Overview and Approach
4. Questions and Answers
5. Ms. Lylea McMahon, Member for Shellharbour
6. Concluding comments

# Richard Crookes Constructions

- Privately owned Australian company
- 40 years experience
- NSW only, mostly regional
- NSW Dept of Commerce Best Contractor
- 94 Govt schools
- Committed to the region
  - South Coast Correctional Centre, Nowra
  - Defence MRH 90 facilities, HMAS Albatross, Nowra
  - Illawarra Police Station, Oak Flats
  - 18 other projects
  - Looking to establish a permanent local presence - Wollongong office



# Ms. Noreen Hay

Member for Wollongong



# Tony Grippi

Program Director, BER  
Richard Crookes Constructions



# Primary Schools for the 21st Century

- “Building the Education Revolution” (BER), part of the Commonwealth Government’s \$42b Stimulus Package
- Approx. \$300m in Illawarra & South Coast
- Other school programs being run concurrently:
  - National Pride Program – Minor capital works & maintenance
  - Science & Language Centres - Secondary Schools

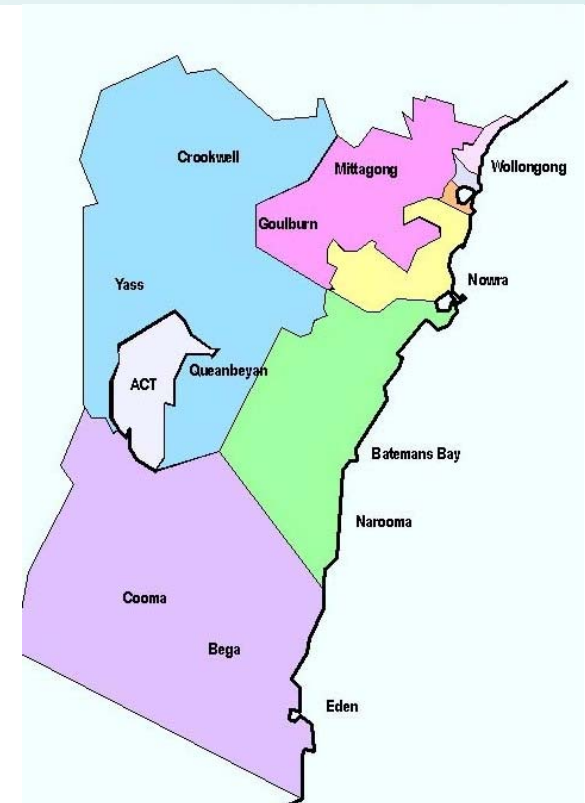
# Objectives

- Quick economic stimulus
- Local employment
- Create high quality school and community infrastructure for future generations



# Overview

- 194 primary schools, 275+ plus projects
- Schools ranging in size from 3 students (Penrose) to 928+ students (Bomaderry)
- Total of 42,282 students
- From Helensburgh in the north, to Towamba in the south, and Wee Jasper in the west
- Total area of 75,000 km<sup>2</sup>
- Schools rolled out in 3 rounds
  - 20%, 40%, 40%
- Construction commences Jul-09, complete Mar-11



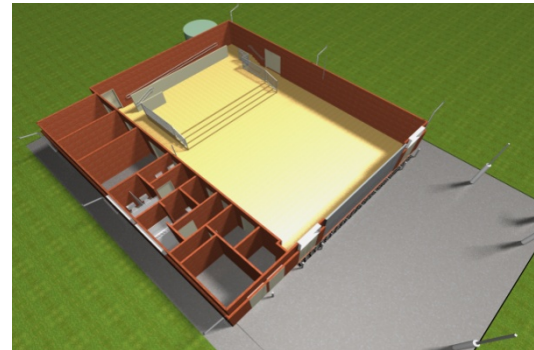
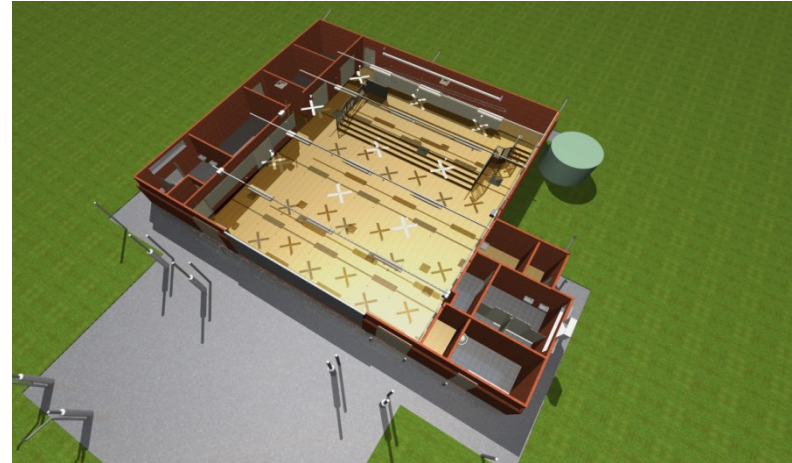
# Facilities to be built

- Halls
- Libraries
- Classrooms
- Administration
- Canteens
- Outdoor Covered Learning Spaces
- Toilets
- Refurbishments

# Facilities to be built con't

- Range of facilities that School Principals have requested
- Standardised designs for maximum efficiency and value for money
- Sustainable design
  - Water tanks
  - Solar panels
- Proven design
  - Decades of refinement and improvement
- Disabled friendly
  - Ramps, access, bathrooms

# Halls



# Libraries



# Classrooms

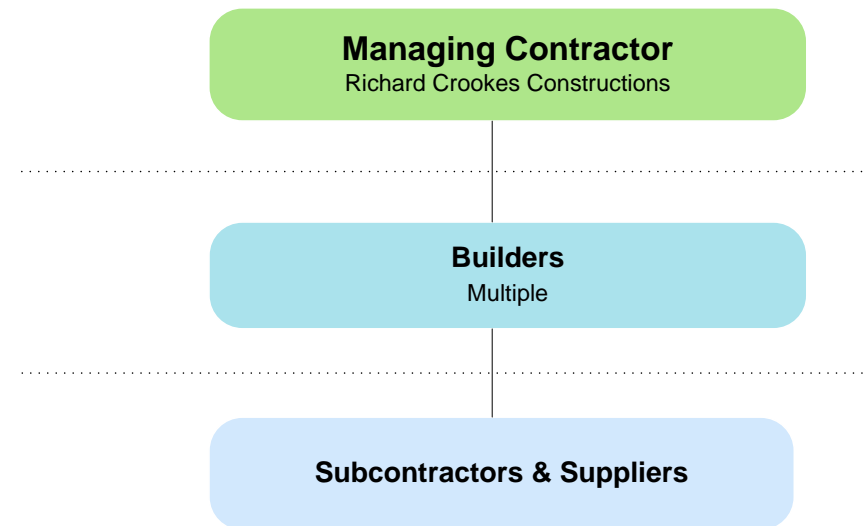


# Recap on what's happened to date

- School Principals nominated their preferred facilities
- State Govt has reviewed and agreed those requests with Principals, and submitted them to the Commonwealth Govt
- Commonwealth Govt has approved the facilities for the first 60% of schools and funding allocated
- Richard Crookes Constructions (RCC) appointed as Managing Contractor

# RCC's Role

- Full responsibility for delivering the program
- Manage the design
- Appoint & manage builders
- Builders will appoint subcontractors & suppliers
- Report to the State
- Meet raft of contractual requirements



# What has RCC done so far

- Collated all expressions of interest, & responded
  - MBA, DET, direct
  - Still taking EOIs
- ‘Hit ground running’ on Round 1
  - Visited all Round 1 schools (47)
  - Design well advanced on most Round 1 schools
- Half-way through a competitive tender process for builders for Round 1 schools
  - All local builders
  - Shortlist of 12

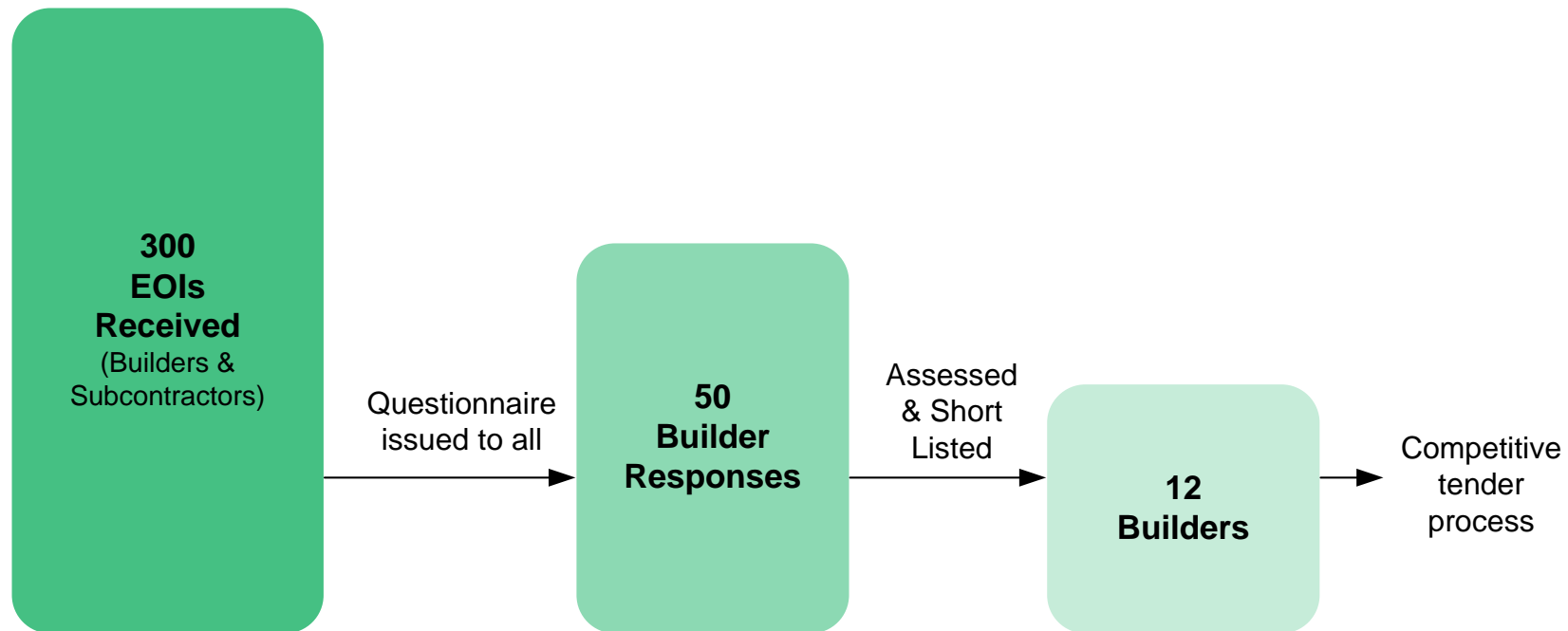


# Round 1 Schools List

Austinmer Public School	Coledale Public School	Reids Flat Public School
Balgownie Public School	Figtree Heights Public School	Robertson Public School
Barrack Heights Public School	Goulburn Public School	Rugby Public School
Batemans Bay Public School	Greenwell Point Public School	Shoalhaven Heads Public School
Bega West Public School	Gwynneville Public School	Sussex Inlet Public School
Bemboka Public School	Huskisson Public School	Sutton Public School
Berkeley Public School	Jamberoo Public School	Tarago Public School
Bermagui Public School	Kangaroo Valley Public School	Taralga Public School
Berridale Public School	Lake Illawarra South Public School	Unanderra Public School
Berry Public School	Lindsay Park Public School	Warrawong Public School
Bibbenluke Public School	Marulan Public School	Windang Public School
Binda Public School	Mount Brown Public School	Wollongong West Public School
Bombala Public School	Mount Kembla Public School	Wolumla Public School
Bulli Public School	Mount Warrigal Public School	Woonona East Public School
Bundanoon Public School	Narooma Public School	Wyndham Public School
Cambewarra Public School	Queanbeyan East Public School	

# Builder Selection Process

## Round 1



# What's happening next

## Round 1

- Appoint builders (officially announced end-June)
- RCC will provide builders with current subcontractor and supplier EOIs
- Builders will run competitive tenders for subcontractors and suppliers
- Builders to commence construction immediately thereafter



# What's happening next

## Round 2

- Already advertised for EOIs for Round 2
  - Still taking them
  - Contact details are in the brochure (via our website)
- Run a competitive tender for builders for Round 2
  - Builders that missed out on Round 1 will get another opportunity on Round 2 (and 3)
- Repeat same process as Round 1 (July)
- Repeat the whole process for Round 3 (Sept)

# Key requirements

- Safety, safety, safety, including child protection
- Maximum local participation
- Value for money
- Highest quality
- Care for the Environment
- Financial Capacity
- Maximum Aboriginal Participation
- Maximum Traineeships & Apprenticeships
- Happy schools... minimal disruptions
- Rapid mobilisation
- Reporting... accurate & regular
- Collaborative, 'one-team' approach



# Safety

- Absolute priority
  - Children, community, workers
- Proven documented systems essential
- Demonstrated commitment
- Compliance with legislation



# Aboriginal participation

- RCC are absolutely committed to Aboriginal Participation
- Equivalent subcontractor commitment required
- Assistance from Koori Habitat and MBA
- Nowra Correctional Centre currently averaging 9%

# Local Participation

- RCC is committed to Local Participation
- Builder's chosen for Round 1 are 100% Illawarra / South Coast based
- Our modelling and market feedback is indicating that local capacity, capable of meeting the requirements, will be strained in Rounds 2 and 3

# Value for money

- Prime objective of this is job creation
- We have very tight budgets to meet
- We will be running a competitive and transparent process
- We implore all builders, and subcontractors and suppliers, to put your best price forward

# Traineeships & Apprenticeships

- Genuine commitment
- Good opportunity
- 20% of all trade work
- Structured training is a contractual requirement
- Support being provided by MBA and Koori Habitat



# Contact

Website: [www.richardcrookes.com.au](http://www.richardcrookes.com.au)

Emai: [ber@richardcrookes.com.au](mailto:ber@richardcrookes.com.au)



# Questions & Answers

